

# A NEW PLANNING DEGREE FOR A NEW CENTURY

ENVIRONMENTAL PLANNING AT  
GRIFFITH UNIVERSITY – 20 YEARS ON





**A NEW PLANNING DEGREE  
FOR A NEW CENTURY  
ENVIRONMENTAL PLANNING AT  
GRIFFITH UNIVERSITY – 20 YEARS ON**

*Darryl Low Choy and Pazit Taygfeld*

**November 2015**



# Contents

## **4 A Chronology of Environmental Planning at Griffith University**

- 4 1993 – 1995 Inception
- 6 1994 – Ongoing Program Development
- 8 The Studios
- 9 The Planning Practicum
- 10 The Teaching Team
- 11 The Support Team
  - The Professional Advisory Board
- 13 Snippets from along the journey to 2015
- 14 1995 – First Student Intake
  - 1996 – Environmental Planning Course Receives RAPI Provisional Accreditation
- 15 November 1998 – Launch of the first cohort of students of the Bachelor of Environmental Planning
- 16 2000 – Full RAPI Accreditation
- 17 2003 – The establishment of the Urban Research Program
- 18 Other Key Events & Initiatives
- 19 The Next Twenty Years

## **20 What do Staff and Graduates say about Griffith's Planning Degree?**

- 21 Memorable Moments
- 22 Why Griffith?
- 24 Distinguishing Attributes of the Griffith Planning Program
- 26 Distinguishing attributes of Griffith's Planning Graduates
- 28 Collage of Memorable Moments

## **32 All Graduated Students Urban & Environmental Planning Programs (Nathan & Gold Coast) 1999 – 2015 (Semester 1)**





## Foreword

I am very pleased to have been associated with the Planning Discipline of Griffith University for a considerable period of time.

As the third planning school in Brisbane and new kid on the block, Griffith had a tough job working up a reputation for producing town planners, given that the incumbents had been around for some time. As the new University in Brisbane, with its Nathan campus immersed in the bush land of Toohey Forest, and having a successful School of Australian Environmental Studies, it was probably a 'no brainer' that Griffith would offer a planning program with an environmental edge. With the environment now a mainstream issue, the idea of having a degree in environmental planning was obviously well thought through.

Some 20 years ago I remember being invited to meet the first cohort of graduates who were presented by the University to industry and the planning fraternity, so proud was the University of its first batch of graduates.

Fast forward 20 years and planning at Griffith has carved out a place, with its graduates working across all sectors of industry and holding their own on an equal basis with planning graduates from other schools of planning. In fact some of the first graduates work with me today and are seen as leaders in their areas of specialty.

During this time the school (now Discipline) has also been at pains to ensure that they have been actively engaged within the profession, with the staff publishing relevant and readily consumable research, as well as informing contemporary debate on planning issues. Lecturers have also maintained a healthy profile amongst the planning profession, both nationally and internationally. The school has also continued to emphasise the importance of involvement with the peak professional body for planners, the Planning Institute of Australia. The close association with Griffith's Urban Research Program also provides a great cross-over between research and teaching.

The school has also expanded to the Gold Coast campus and now healthy planning courses are run out of both campuses. A successful post-graduate program is also conducted from the Nathan campus.

I was originally forced upon the Professional Advisory Board as a representative of the Planning Institute, but have since been invited back to serve on the Board in my own right, culminating in an invitation to chair the Professional Advisory Board. The importance that the School of Environment and its Planning Discipline places on the input and advice of the members of the PAB, about how to guide and shape their Urban and Environmental planning programs, also shows that the school embraces the need to look outwards and adapt to the changing world – part of the process of planning. It is pleasing to watch the quality of successive intakes grow year on year, which reflects the Discipline's growing reputation.

From humble beginnings, Griffith's Planning Discipline and its Urban and Environmental Planning Programs are now well established in their own right and I look forward to continuing my association into the future.

**Kerry Doss, FPIA**

**Chairman Professional Advisory Board**

*Manager City Planning & Economic Development, Brisbane City Council*



**Kerry Doss, FPIA**  
*Chairman Professional  
Advisory Board*

# A Chronology of Environmental Planning at Griffith University

## 1993-1995 Inception

The Environmental Planning degree at Griffith University began with a visionary conversation in 1993 between Professor Lex Brown and Professor Geoff MacDonald. Brown and MacDonald, who were teaching planning as part of a Bachelor of Environmental Sciences at Griffith University for more than a decade, became aware that a large number of Griffith Environmental Science graduates were enrolling in post-graduate planning degrees at other universities, including UQ and QUT.

**‘Environmental Science students started to realise that to follow through with the implementation of their environmental commitments they needed some way to actually do something in real life - not just studying the science or even policy. And so many of them started to see that planning was a way which allows them to implement environmental dimensions’.**

*(Prof Brown, 2015)*

Seeing their students seeking planning qualifications at other universities gave Brown and MacDonald the idea that planning should be taught as a separate and unique program at Griffith University.

Brown and Macdonald were also aware that existing planning degrees, offered by other universities, failed to capture the complex nature of planning. Professor Brown, who was trained as a town planner, with a Master of Urban and Regional Planning from UQ, was a little “disillusioned” with the way town planning was taught:

*‘It tended to focus on old planning bigotry... it was a normative approach to planning, which failed to consider the biophysical and the social environment within which planning was taking place’ (Prof Brown, 2015).*

So Brown and MacDonald made a decision that the Griffith Planning Degree should distinguish itself from existing programs by seeking to integrate the biophysical and social sciences with planning.

In March 1994 Professor Brown met with the University’s Vice Chancellor, Professor Roy Webb, to discuss his proposal for a new Environmental Planning Degree at Griffith University. At the same time he was trying to convince his colleagues at the School of Environmental Science to support his proposal:

*‘It was amazingly difficult and it took a great deal of tenacity to convince internally...after all here I am, Head of the Australian School of Environmental Studies, responsible for bringing students into that degree and keeping the numbers up, proposing that we create a new program, and with an awful lot of acrimonious discussion, to create a new school’ (Prof Brown, 2015).*

While some of his colleagues were not too enthusiastic about supporting the establishment of a separate Planning Degree, the then Dean of the Environmental Science Faculty, Professor Bill Hogarth, was encouraging:

*‘Planning was always an integral part of the environmental Studies degree. It was a popular area with the students. Students who had the planning expertise in the degree found it relatively easy to obtain jobs. When the University was looking to expand its student numbers it was a natural progression to develop the environmental planning degree from the strong background it had obtained in the environmental studies degree’ (Prof Hogarth, 2015).*

1993-1995	1994	1995	1996	1997	1998
Inceptions	Appointment Darryl Low Choy	First student intake. Appointments: Dr. Neil Sipe, Dr. Faranak Miraftab, Dr. Andreas Muhar	RAPI provisional accreditation	Appointment Dr. Eddo Coiacetto	Launch of first cohort

## Key Events





**‘With public concern relating to the environment increasing rapidly, it is important to introduce courses of study that offer a heightened environmental awareness as well as the competency to address complex environmental issues. Perhaps nowhere is that more important than in the field of planning where control over human activities in natural settings is the essence of the planning process...Planners have new demands placed on them to understand and control the environmental effects of human activity- at all scales of planning, and in all biological, physical and social dimensions.’**

*(Prof Brown, promotional material)*

*Griffith University’s Environmental Planning and Science students undertaking field work in Danum Valley, Malaysia.*

In 1995 Professor Geoff MacDonald has left Griffith University to become the Head of the then Department of Geographical Sciences and Planning at the University of Queensland. Professor Brown has started the search for staff and managed to attract Darryl Low Choy, who has been a long term teacher at QUT and who was closely connected with contemporary planning practice:

*‘I was attracted to the Griffith planning program because it offered a new paradigm in planning – a science based ‘approach’ to planning the contemporary issues of our cities and regions. Given my undergraduate geomorphology-geological background and consulting experience, I had been disappointed that traditional planning practice did not recognise the valuable role that science could play to inform planning policy and practice’ (Prof Low Choy, 2015).*

At the same time Professor Brown identified the merits in fostering a close relationship with the planning profession and seeking their advice and feedback on the course development; a relationship which evolved into the formation of the Professional Advisory Board (PAB). Its membership included representatives from a range of sectors including law, environment, government, consultancy and the private sector.

## 1999

Graduation – second cohort.  
Introduction of new degrees: Master of Environmental Planning, and Graduate Diploma in Environmental Planning.

## 2000

RAPI full accreditation. Introduction of two new five-year undergraduate degrees: Planning and Law and Planning with Environmental Sciences. Graduation – first Master students.

## 2001

New studios and GIS facilities. School receives RAPI award for its entry “Planning at Griffith”. Appointment – Dr. Jenny Cameron .

### 1994- Ongoing Program Development

With the majority of the Faculty staff consenting to the introduction of a new Environmental Planning course, efforts were now directed towards the development of the course program and towards seeking accreditation from the Royal Australian Planning Institute (RAPI).

The program building process was underpinned by both academic and vocational objectives, which were described in the 1994 course proposal to RAPI as follows:

#### Academic Objectives:

'The School aims to produce an effective combination of knowledge and skill-based learning experience. The academic framework will be interdisciplinary, integrating an understanding and concern for people and their environment, and will ensure that students are able to demonstrate proficiency in a wide range of methods and techniques of relevance to current and emerging planning practice and apply environmental principles to this practice'.

**'The Planning program offers a strong foundation for students in equal parts for the environmental, economic, social and legal impacts and applications of planning.'**

*(Greg Tupicoff, Project director PEET Limited, 2015)*

#### Vocational Objectives:

'The School of Environmental Planning seeks to produce graduates who have been trained in a way and to a level which has prepared them to work effectively in the planning profession in Australia and in both developed and developing countries overseas. Graduates will be well versed in both natural processes and social systems. To satisfy the diverse demand of the planning profession, the graduates will be well-rounded, aware of the integrative elements in the discipline, able to think holistically and perform in a variety of professional settings'.

In addition, Professors Brown and Low Choy wanted the planning course to be firmly based in the environmental studies area; produce a graduate that could be employed on their first day out at a local government; facilitate problem based learning and hands-on experience for its students through an innovative delivery mode- the studio as well as foster an interest in research.

**'.... This planning education program makes an outstanding contribution to urban and regional planning in Australia. The program is underpinned by a vision of planning based on environmental principles and a creative and innovative implementation of this vision....'**

*(Royal Australia Planning Institute (now PIA) part citation of Award of Excellence in the Planning Scholarship category, 2001)*

Lack of funding was an obstacle to meeting these objectives, but it did not deter Professors Brown and Low Choy from aiming to develop a highly innovative and professionally accredited program:

*'We sat down and said: what can we offer in Griffith already that would meet RAPI requirements and need the absolute minimum number of new courses that would have to be taught, and therefore the absolute minimum number of staff, in order to teach basically out of the environmental program, but with enough planning so they can reach the RAPI requirement and practice as planners' (Prof Brown, 2015).*

Because the planning course was to be based on both the biophysical and social sciences, utilising existing staff and courses from the environmental sciences degree was desirable and plausible. Thus the original program included courses such as: research and statistics, environmental policy, environmental economics, municipal engineering and management, ecological theory and practice, environmental pollution, as well as core planning courses such as development processes studio, environmental planning studio, strategic planning studio, planning practicum and more.

**'The school of Environmental Planning grew from the idea that many of the issues and challenges which face professional planners in their day to day activities, requires a fundamental understanding of environmental processes and the interaction of the physical, biological and social environment with the people who live there...The school's philosophy has been to co-ordinate the activities of planning professionals and environmental specialists dedicated to an integrated and innovative approach to planning education and planning practice.'**

*(Professor Brown, 1998, Graduate Profile)*

2002	2003	2004	2005
Appointment- Dr. Neil Sipe- new Head of School. Appointment- Dr. Dianne Dredge.	Prof. Lex Brown: new Dean of Faculty of Environmental Sciences. Appointment: Dr. Brendan Gleeson. Establishment of the Urban Research Program. Dr. Jenny Cameron receives Griffith's Early career award for excellence in teaching.	Dr. Dianne Dredge receives Griffith's Early career award for excellence in teaching.	Appointments: Dr. Caryl Bosman and Mr. Jason Byrne (Gold Coast Campus). Launch of PIA award winning website: <a href="http://whatisplanning.org">whatisplanning.org</a>



**‘From the commencement of the Environmental Planning program, and especially when the first graduates were ‘show-cased’ to potential employers via a booklet, it was clear that Griffith University was committed to a vision of integrating town planning with broader environmental considerations and the practical needs of the workplace; and these strengths have continued to characterise the program and its alumni.’**

*(Vicky Brady, President EIANZ and Alan Chenoweth, Business Unit Manager at Cardno, 2015)*

In addition to these subjects, the course was also designed in a manner to give individual students maximum choice in their course of study. Accordingly, the course provided for six areas of specialisation, including: ecology, resource planning, developmental planning, economics and policy, tourism and recreation, and pollution.

Addressing issues such as ‘sustainable development’, ‘physical carrying capacity’, ‘multiple use of land’, ‘water resource constraints’, and ‘aboriginal management of land’ was a goal that was ahead of their time in the planning context. Terms such as ‘sustainability’ have only started to infiltrate the planning field and the holistic view proposed by the Griffith degree was unusual, but desirable and timely.

**‘Griffith planning programs offer students the opportunity to design and create dynamic spaces and places. Through integrated industry placements, graduates develop strong connections with industry and the community, complimenting their understanding of the built and natural environment and sustainability and planning principles.’**

*(Anne-Marie Gerlach, Head of Faculty – Humanities St Margaret’s Anglican Girls School, 2015)*

To ensure that the objectives are truly met and reflected in the course program, the original program was to be reviewed every few months to the ‘dismay’ of the growing number of staff... Professor Brown reflects:

*‘You plan four years of program, but in the end of the first year of teaching we would say, what should we do in the second? And then in the second, what should we do in the third, and so forth... I remember the staff getting upset... we would pull it apart every year. At 9pm at a Binna Burra retreat one staff member threw everything down and said : ‘I can’t stand it anymore’, I think we were around our 14th hour of that day... I did drive them fairly hard, but it was an immensely enjoyable team to work with. I think everyone would have very fond memories of that...’ (Prof Brown, 2015).*

Perhaps one of the most distinguishing factors of the Griffith Planning Program is the mode of delivery which includes studios and a Planning Practicum module.



**‘The integration of environmental sciences in land use planning is a unique skill set Griffith graduates bring to the planning profession. These skills are invaluable in delivering sustainable development outcomes in contemporary planning practice.’**

*(David Corkill, Principle Planner. Buckley Vann Town Planning Consultants, 2015)*

**‘Griffith University’s planning program, among equivalent Australian courses of study, is uniquely grounded in environmental science, and graduates accordingly have a sound understanding of the biophysical, social and economic context in which planning and development activities occur, which is excellent preparation for their careers in planning and related fields.’**

*(Guy Gibson, General Manager – Queensland Communities, Land Lease, 2015)*

## 2006

First Environmental Planning student intake at the Gold Coast Campus.

## 2007

School of Environmental Planning merges into the Griffith School of Environment. Appointment: Prof. Paul Burton. Appointment: Dr. Dianne Dredge- Head of Discipline. Dr. Eddo Coiacetto receives the Environmental Sciences Faculty’s citation for his contribution to teaching.

Dr. Dianne Dredge wins prestigious Carrick Citation for outstanding contribution to student learning. Two PIA awards to staff and students.



Development Processes Studio- Gaol Project. Phil Woods (standing), Kylie Rolley and Ben Harman (sitting).

### The Studios

The original program design recognised the importance for the inclusion of problem based learning to maximise student learning in a professionally accredited planning program:

*'We designed the original studios to replicate, within the limits of the academic objectives, 'real world' situations that can demonstrate to students the relevance of what they are learning and also to give them practice in developing and applying sets of specific technical and generic skills' (Prof Low Choy, 2015).*

Hence, the original program included a number of studios in second and subsequent years, covering: development processes; environmental management; strategic planning; and policy planning.

Great emphasis was placed on what are now contemporary requirements of successful planning practice such as the communication of planning outputs to clients and to the community that require professions to 'sell' and to firmly justify their plans, policies and proposals based on (scientific) evidence.

The studios also provided opportunities to expose students to contemporary thematic and place-based planning issues and to involve planning practitioners from industry, government and community based organisations as guest lecturers and tutors in the studios.

The original philosophy of Griffith's studio based teaching and learning approaches is still very much evident in the existing programs which now include studios in: introductory planning; environmental planning; development processes; urban analysis and planning; natural resource planning; and the capstone studio of strategic planning.

All Griffith planning programs were redesigned and revamped in 2013 as part of the nation-wide requirement to ensure that all educational programs were consistent with the Australian Qualifications Framework (AQF). In the case of tertiary planning programs there was also the requirement to ensure that programs and courses met the accreditation requirement of the Planning Institute of Australia.

The revamped programs provide maximum opportunities for students to learn within the context of contemporary 'real world' issues and challenges largely through the staircase model of studios now embedded throughout all of the Griffith planning programs.

#### 2008

Total number of Environmental Planning Graduates exceeds 300.  
Appointments: Dr. Dianna MacCallum (Nathan Campus), and Dr. Aysin Dedekorkut (GC Campus).

Numerous PIA Awards won by staff and students.

#### 2009

URP (Prof. Darryl Low Choy) receives national PIA Award for Excellence in Planning Scholarship, Research, and Teaching.

#### 2010

Staff and students win number of PIA awards of Excellence.



## The Planning Practicum

The Planning Practicum has been one of the key vehicles by which the reputation of Griffith's Urban and Environmental Planning Discipline has been created in the urban and regional planning industry and profession. This innovative course was designed and introduced in 1998 and pioneered Work Integrated Learning at Griffith University, well before the latter term became part of the University's language and practice. The development of the Planning Practicum was pioneered by Assoc Prof Eddo Coiacetto, the course's first convenor:

*'My vision for the Planning Practicum was to help build resilient and astute planners for the challenges of making a better world: professionals who would flourish in the highly stressful, sometimes toxic, political environment of planning without losing their idealism' (Assoc Prof Coiacetto, 2015).*

All undergraduate students, not just a select few, undertake the Planning Practicum in their final years. The course combines structured work placements with students being directly supervised by a qualified planner and assessment shared by both academics and practitioners. It also includes classroom activities that aim to integrate and advance theory, practice and planning education. It involves both the profession and academics in the training of planners

**'The planning practicum course is the perfect way to set students up for their first graduate job. This course provided me with the tools and skills to prepare a winning resume, apply for jobs, be confident in interviews and to promote my personal brand. These skills helped me to get my first graduate job in environmental planning.'**

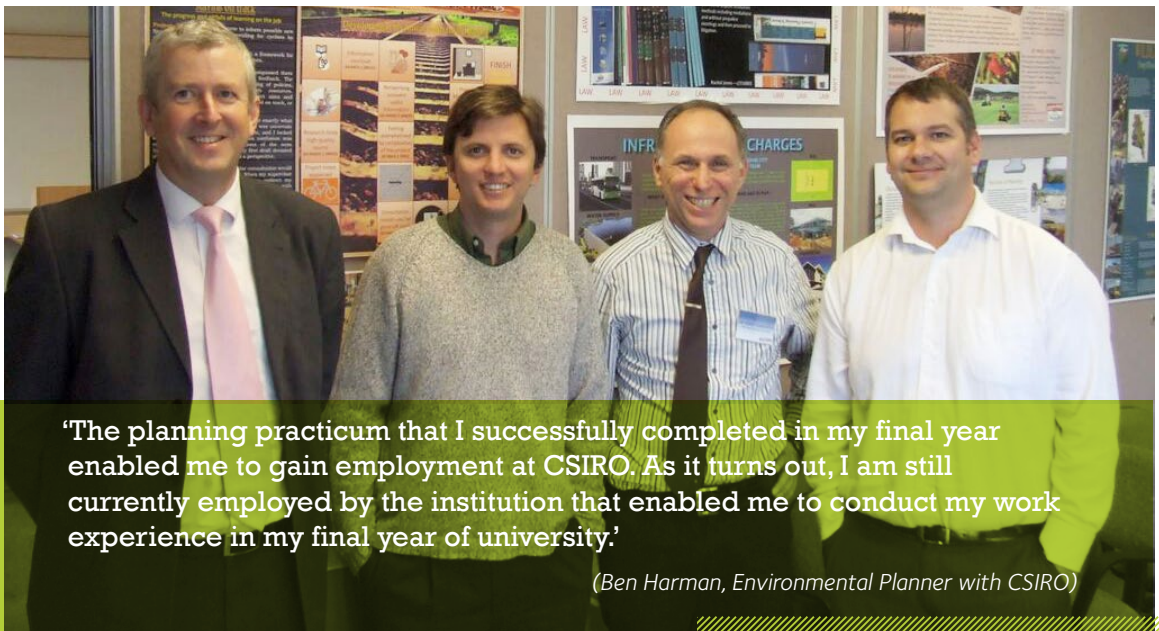
*(Emily Madison, Griffith's Planning Graduate)*

for a wide range of potential employment possibilities and provides a maturing catalyst and a transition to professional practice for planning students.

The Planning Practicum course has been recognised by graduates and employers as one of the unique characteristics of the planning program at Griffith and as a key contributor to the high rate of graduate employability.

**'The City of Gold Coast enjoys a mutually rewarding partnership with Griffith University's Planning Programs which naturally align with the City's own planning and environment values.'**

*(Kim Mahoney, Manager, City Planning, City of Gold Coast).*



**'The planning practicum that I successfully completed in my final year enabled me to gain employment at CSIRO. As it turns out, I am still currently employed by the institution that enabled me to conduct my work experience in my final year of university.'**

*(Ben Harman, Environmental Planner with CSIRO)*

*Planning Practicum students with A/Prof Eddo Coiacetto and employers*

### 2011

All programs successfully reaccreditation by PIA.  
Staff and students win number of PIA awards of Excellence.

### 2012

Staff and students win number of PIA awards of Excellence.

### 2013

Prof. Darryl Low Choy appointed Head of Discipline (Planning).  
New revamped (AQF compliant) urban and environmental programs approved for introduction 2014.  
Assoc Prof Eddo Coiacetto receives PIA(Q) award for his book "Understanding Land Development"



Staff Retreat (2010) Front: Eddo Coiacetto, Lex Brown, Pat Dale, Lynne Bradshaw, Karen Vella, Deanna Tommerini, Zsuzsa Banhalmi-Zakar, Merrill Bowers, Caryl Bosman, Aysin Dedekorkut, Paul Burton. Back: Jason Byrne, Geoff Woolcock, Neil Sipe, Jago Dodson. Missing: Darryl Low Choy and Wendy Steel.

### The Teaching Team

Recruiting staff to join the small team at Griffith University was an exciting endeavour according to Professor Brown.

The first to join the team was Darryl Low Choy as Deputy Head of School, followed by Dr. Andreas Muhar (a GIS specialist from Vienna) and Dr. Faranak Miraftab (who was originally from Iran, but with academic qualifications from Norway and the United States). Then came Eddo Coiacetto from Armidale and Dr. Neil Sipe from Miami, USA.

Whilst some staff naturally moved on for personal and work related reasons, their individual contribution to the development of the degree and the establishment of the necessary facilities, such as the GIS labs, cannot be overlooked.

The early planning team was quite international and many were new to the job. Each staff member brought their unique skills, experiences and qualifications to the new School and the new degree. All were bound by a common purpose and philosophy, and soon the School was in full flight.

Beside the core planning staff, the planning program was supported by staff from the School of Environmental Sciences, including Dr. Pat Dale, Dr. Errol Stock and Deanna Tomerini.

The school continued to recruit new staff and the Nathan Campus Planning team was joined by Dr. Jenny Cameron in 2001, Dr. Dianne Dredge in 2002, Dr. Joseph Affum in 2003, Dr. Tan Yigitcanlar, A/Professor Scott Baum, and Dr. Donna Huston in 2006, Dr. Wendy Steel in 2009, Dr. Tooran Alizadeh in 2011, Sonia Kirby (contract) in 2013 and Dr. Natalie Osborne in 2015. Sonia Kirby has the distinction of being the first alumni to return to the Planning Discipline as a teacher.

In 2006 the Environmental Planning degree was also offered at the Gold Coast Campus, and the planning team grew to include: Dr. Caryl Bosman and Jason Byrne, and in 2008–2009 Professor Paul Burton, Dr. Aysin Dedekorkut, Dr. Karen Vella and Zsuzsa Banhalmi-Zakar (contract).

During 2015 the following appointments were made: Dr Natalie Osborne (2009 alumni) and Dr Tony Matthews. Moving into its next decade, the Planning Discipline now comprises 12 full time academic staff supported by research staff from the Urban Research Program.



**'I had an amazing experience at Griffith and the support and expertise I received has led to this acknowledgment.'**

*(Ethan Bowering, 2013 Planning Graduate)*

Ethan Bowering on being awarded the Planning Minister's Town Planning Prize and the Planning Institute of Australia's final year student prize, 2014.

## 2014

Prof. Darryl Low Choy awarded Visiting Professorship for Senior International Scientists of the Chinese Academy of Sciences.

Prof Lex Brown awarded Rose Hulman Award by the International Association for Impact Assessment.

Successful conduct of 2 month Short Urban and Environmental Planning Course for Vietnamese planners.

Staff and students win number of PIA awards of Excellence.

Drs Byrne, Sipe, Dodson edited book awarded nation PIA Award in Cutting-Edge Teaching and Research category.

Emily Maddson awarded University medal.



## The Support Team

Throughout the past twenty years, the School/Discipline has been very well supported in the administrative and technical areas. Notable past administration support was provided by Barbara Shaw and Lynne Bradshaw whilst Albury Chandica provided cartographic and remote sensing support. Currently, the Discipline is very ably supported by Kathy Carter (Discipline Admin Officer, Nathan) and Merrill Bowers (Discipline Admin Officer, Gold Coast). Technical support, especially in GIS is provided by Siti Amri (Nathan campus) and Mariola Rafanowicz (Gold Coast campus).

## The Professional Advisory Board

The Planning Degree at Griffith University was not only geared towards fostering lateral thinking about urban and regional issues which extended beyond land use management and physical design, but also towards providing the necessary and practical planning skills that would allow Griffith students to gain employment upon their graduation.

**'I think Griffith offers very well established, balanced, practical and up to date planning programs, that are well respected within industry, and have delivered very capable and employable graduates.'**

*(Sean Cullen, Planning Institute of Australia, Queensland Division, 2015)*

To achieve the later, it was critical to involve planning professionals and industry representatives who could provide the academic cohort with practical advice on the development of the planning program in accordance with what was happening in the "real world".

The Professional Advisory Board, assembled in 1994, included 12 respected professionals in the fields of planning, environment and law. The Board's role was to guide the development of the Bachelor of Environmental Planning since its inception in 1994. Board members included: Mr. Geoffrey Booth (Director, Planning Australia Services Pty Ltd), Mr John Brannock (Director Brannock & Associates), Dr. Alan Dale (CSIRO), Mr. Noel Dawson (NRM Consultancy), Ms. Julie Edwards (Manager, Planning and Development Department, Ipswich City Council), Ms. Robyn Hesse (Manager, Planning and Assessment, Department of Environment and Heritage), Mr. Michael Kerry (Divisional Manager, Urban Management Divisional, Brisbane City

**'My Griffith degree was integral to attaining my present role as a planner. It confirmed to my employers that I had the knowledge and skill set to take on additional challenges and responsibilities at work'.**

*Jake Anson, State Infrastructure and Planning Manager, AFL Queensland*

Council), Mr. Peter Syson (Principle Manager, Technology and Environment Division, Department of Main Roads, Ms. Sandra Vigar (Regional Manager, Environmental and Engineering Consultant), Ms. Jan Williams, Mr. Ian Wright (Partner, Coorrs Chambers Westgarth Solicitors), and Mr. Kevin Yearbury (Director-General, Department of Communication and Information, Local Government and Planning).

The PAB became a very important component of the development of the Planning Degree at Griffith – 'always providing fantastically good advice' (Prof Brown, 2015). The PAB remains consistently supportive and enthusiastic about the degree. In 1995 John Brannock observed that:

*'The emerging need for a new brand of planning professional is evident through all facets of government and the private sector. Various pieces of legislation and proposed Environmental Acts require the attention of professionally recognised Environmental Planners. The Bachelor of Environmental Planning degree will fill the void which currently exists in the urban and regional planning area' (Brannock, 1995).*



*Professional Advisory Board Meeting at Griffith University.*

## 2015

Appointments: Dr Natalie Osborne  
Second 2 month Short Urban and Environmental  
Planning Course for Vietnamese planners conducted.  
Current student numbers: 290 u/g and 39 p/g

Prof Brown awarded Lifetime Achievement Award of the UK Noise  
Abatement Society  
Prof Low Choy elevated to Fellow of PIA  
Jake Anson (Masters alumni) named Young Planner of the Year by PIA (Q)

Similarly, Kevin Yearbury (Director-General, Department of Communication and Information, Local Government and Planning), stated that:

*'This new Environmental Planning course at Griffith University with its particular focus on planning with the environment is timely...it will better equip planners to integrate environment and development at the planning, policy and management levels' (Yearbury, 1995).*

The relationship between Griffith University and the PAB remains positive and strong to this day. The present PAB comprises of 12 professional representatives from State Government, Local Government, Non-Government Organisations, Professional Organisations, Land Development Industry, and Independent Urban and Environmental Planning Professional. Their support for the Planning Degree and appreciation of Griffith Planning graduates remains strong and is documented throughout this booklet.

Membership of the current PAB includes: Mr. Greg Chemello (Deputy Director-General, Planning Group, Department of State Development, Infrastructure and Planning), Ms Kate Weir (Director, State Development Areas Division, Office of Coordinator-General Department of State Development, Infrastructure and Planning), Mr Luke Hannan (Manager, Environment and Planning, Policy and Representation Branch, Local Government Association of Queensland), Mr. Kerry Doss (Manager, City Planning Brisbane City Council), Ms. Kim Mahoney (Manager, City Planning, City of Gold Coast), Mr Simon Warner (CEO, SEQ Catchment), Mr. Sean Cullen (Planning Institute of Australia [Queensland Division], Strategic Land Use Program Leader Strategy and Planning Branch, Logan City Council), Ms Vicky Brady (President, Environment Institute of Australia and New Zealand [SEQ division]), Ms Anne-Marie Gerlach (Vice President, Geography Teachers Association, Queensland), Mr Greg Tupicoff (Project Director, PEET Limited), Mr Guy Gibson (General Manager- Queensland Communities, Development Lend Lease), Mr David Corkill (Principle Planner, Buckley Vann Town Planning Consultants).

**'The Griffith Planning Discipline is dedicated to educating and graduating a new generation of urban and environmental planning graduates who have the passion and the supporting skills and knowledge to address the contemporary and emerging challenges confronting our communities.'**

*Professor Darryl Low Choy, Head of Discipline (Planning) 2015.*



*Professional Advisory Board Meeting at Griffith University.*



# Airport plan given wings

PLANS to revamp a Brisbane aerodrome are taking flight.

More than 60 environmental planning students from Griffith University have been asked to prepare a detailed scheme to revitalise Archerfield Airport.

Course convener Dr Eddo Coiacetto said Archerfield was the premier general aviation airport in Brisbane but had not escaped the downturn in the aviation industry.

"In the 1970s more than 1000 planes operated from there, but that figure is around 250 now," he said.

"The plan will aim to be a model of sustainable develop-

ment. We want to see the airport's infrastructure and businesses improved - not cleared or used for other purposes.

"The project highlights a diversity of tasks where environmental planning skills can be applied."

Dr Coiacetto said this might involve exploring emerging markets, such as flight training for Chinese and Indian students, or redesigning the airport to create clusters of similar businesses.

Fly Archerfield, a non-profit group that represents aviation

businesses at the Beatty Rd site, asked the second year and post-graduate students to take part.

They jumped at the chance of some practical experience and will present their findings in a few weeks.

Student Annete Cupitt said the course was challenging, requiring a mix of high-level planning and design skills.

"The best thing will be to see if Fly Archerfield puts any of our ideas in place in the future," she said.

"That would be rewarding."

(Below): *The Sunday Mail*  
December 17, 1995



■ Fly Archerfield's Emery Williams, left, has called on Griffith University planning students, including Emma Courtts and Annete Cupitt, to help revamp Archerfield Aerodrome.

(Above): *The Southern Star* (Springwood)  
12 October 2005, p. 85

Snippets from  
along the journey  
to 2015

## Environmental sciences enter the 21st century

THIS year Griffith University offered a new professional degree in regional and town planning, giving graduates specialised knowledge in the environmental field — knowledge increasingly sought by government, industry and the community.

The four-year, full-time course leads to the award of Bachelor of Environmental Planning (BEnvPlan).

Professional accreditation for the course is being sought from the Royal Australian Planning Institute and it is expected that graduates will be eligible for corporate membership of the institute.

Senior lecturer in the School of Environmental Planning, Darryl Low Choy, said this was the only course of its kind in Australia, although similar courses were sure to be duplicated by institutions.

"The planning profession has been slow in responding to the requirement for a more holistic approach to planning our landscapes and urban areas, especially taking into consideration environmental concerns," he said.

"I think it is absolutely critical that all aspects of the biophysical, as well as the social, cultural, political and economic environments, are taken into account in our planning endeavours."



Environmental planning students check details of a new urban development in Brisbane

Areas students specialise in include conservation planning, environmental quality and pollution management, land planning for indigenous people, rural and strategic planning, environmental assessment, and urban environmental planning.

"Planning is about managing change and presenting options for future action and future designs for our landscapes — reconciling opposing points of view — weighing up the advantages and disadvantages, giving our communities and our political decision makers a number of choices," Mr Low Choy said.

The new planning school and its courses will have a more comprehensive and scientific

approach to the full range of physical, biological, social, cultural and economic issues involved in planning.

"Graduates will be capable of fully integrating all of these diverse issues to produce holistic options, which is a common deficiency of the present system," he said.

"Our approach will be more responsive to community needs and priorities because our students will be taught to plan with the community and not just for the community."

In the fourth year of the course students will work under the supervision of a planning practitioner from either the public or private sectors.



First Environmental Planning cohort on their graduation night (1998)

### 1995- First Student Intake

Two years after Professor Lex Brown and Professor Geoff MacDonald conceived the idea that Griffith University should have its own Environmental Planning Degree, the first group of students was initiated into the program. The first intake comprised of 16 students in total who transitioned from the Bachelor of Environmental Science to the Bachelor of Environmental Planning.

This was also a very exciting time for the staff, whose dedication and enthusiasm were well noticed and appreciated by the students:

*'We were the first intake, 16 of us at the time and a very close knit group, and we knew fairly well that we were the Guinea Pigs and that this is the first time that the degree has been taught... but we did have full confidence that we were going to get what we needed from the course and Darryl's and Lex's passion and motivation was very evident from the beginning' (Sonia Kirby, Graduated in 1998).*

The first cohort was joined by 26 new students in 1996 and many more students in subsequent years.

### 1996- Environmental Planning Course Receives RAPI Provisional Accreditation

In August 1996 the School of Environmental Planning received a very positive feedback from the visiting RAPI's board members and a provisional accreditation for the course. The board perceived the course to be "innovative", "interdisciplinary", and "timely":

**'The board recognises the innovative nature of the program and its relevance to present professional activity, as well as its potential to contribute to the future development of the integration of interdisciplinary fields of planning. The Board noted particularly a high content of practical work through studios and practicum of a wide variety of specialist fields.'**

*(RAPI document 1996, p. 11)*

### 1998 Hong Kong Student Exchange Program

Under a MoU between the University of Hong Kong and Griffith University, a Student exchange program between the Centre for Urban Planning and Environmental Management (UHK) and the School of Environmental Planning (GU) was initiated in January 1998 and has continued to the present.

The annual exchange program aims to provide students with an opportunity to experience another culture and its built environment along with the planning responses that these communities have evolved to manage their environments. The exchange program has social as well as educational objectives. The exchange is open to third year undergraduates or first year masters students. Griffith exchange students have included: Sonia Kirby (1998); Amanda Howard (1999); Daniel Murray (2000); Fiona Wallin (2001); Shelly Welsh (2002); Andrew Wells and Wendy Savill (2003); Susan Laitala (2004); Sally Scott (2005); no student in 2006; Rikki Pieters (2007); Eve Kirkwood (2008); Alisha Ferguson (2009); Emily Hatfield (2010); Adrian Woolley (2011); Thomas Gardiner (2012); Thomas Holmes (2013); Tiffany Prigg (2015).

Number of student post exchange articles have appeared in the *Queensland Planner* over the years where the students have shared their insights and experiences.

**'Talk about being thrown in the deep end! [The Hong Kong exchange program] was a cultural experience that really defined my planning experience with Griffith University and portrayed the plethora of opportunities that are possible by undertaking a planning program at Griffith University.'**

*Thomas Gardiner (exchange student 2012)*

**'... once in a lifetime opportunity ... (that) has fostered a cross cultural understanding of planning in an extreme urban environment that I could not have attained at home .... I anticipate that I will reflect on this enhanced learning and my many experiences for the duration of my planning career and life.'**

*Sally Scott (exchange student 2005)*





## November 1998- Launch of the first cohort of students of the Bachelor of Environmental Planning

With the first cohort of students about to graduate, it was clear to the proud staff and students that there should be a special celebration to mark the event. Prof Brown reflects:

*'Because we were a new planning school, about to be launched out to the market, we had to make sure our graduates will be employed...So we organised a major launch; we invited all the planning profession and all the parents of the final year students to a function in the State Library. We also developed a graduate profile booklet, which no one has ever produced before' (Prof Brown, 2015).*

The presentation of the first graduates took place on Tuesday, the 17th of November, in the State Library at South Bank and was a very special event, remembered fondly by staff, students and the professionals who were invited to attend.

*'This was a great affair with over 150 people present, the final year students in their blue gowns, superb display material on the walls of four years of student work, and a quartet playing in the background. Darryl Low Choy was Master of Ceremonies and there were short addresses by Prof Lex Brown, Head of School, Prof Bill Lovegrove, The University's new Deputy Vice Chancellor, Chris Buckley, President of the Royal Australian Planning Institute, Queensland division, and by Helen Danalis representing the graduate students...Barry Carbon, Director General for Department of Environment and Heritage congratulated the graduates, the School and the University for its innovative degree program. His view was that Griffith was now a leader relative to the "sandstone" universities.... It was a superb evening' (Deans Newsletter, 11 Dec 1998).*



*First graduates meet members of PAB and prospective employers (First Cohort Graduation night 1998)*



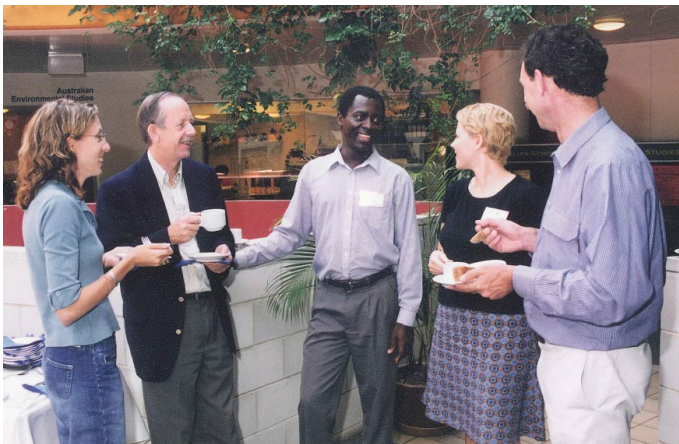
*Proud guests of graduates share a light moment with Barry Carbon and Darryl Low Choy*



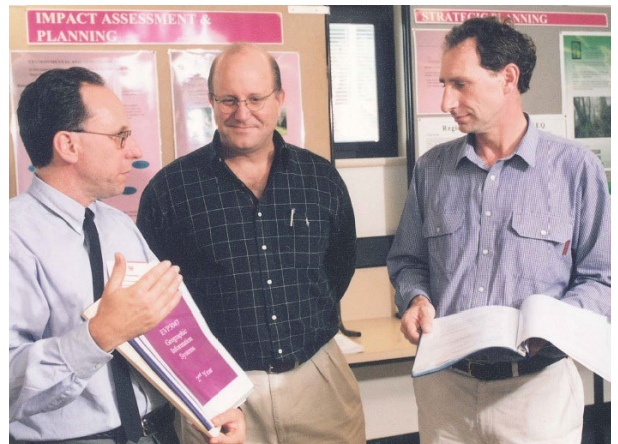
*Barry Carbon, Director General for Department of Environment and Heritage, congratulates the first cohort of Environmental Planning Students.*

## 2000- Full RAPI Accreditation

In 2000, Griffith's School of Environmental Planning receives an overwhelmingly positive feedback from the visiting board of the Royal Australian Planning Institute, which confirmed that the philosophy of the School was appropriate to meet the current and future needs of the planning profession both locally, nationally and internationally. Subsequent to the RAPI review, the School receives its accreditation for all of the five degrees offering training in urban and regional planning.



RAPI Accreditation Board members with Griffith University staff.

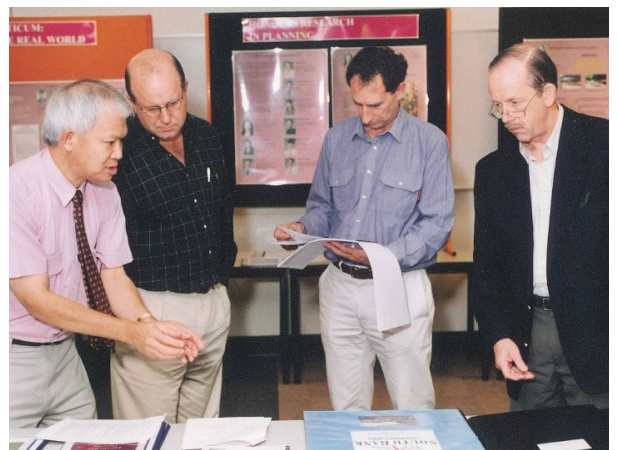


Eddo Coiacetto with RAPI Accreditation Board members

‘The Board believes the Bachelor of Environmental Planning is a timely and innovative educational initiative... It is also believed that it will prove to be a significant positive addition to the planning profession.’



Chris Buckley with student Sarah Gall during RAPI Accreditation Visit in 2000



RAPI Accreditation Visit in 2000



## 2003- The establishment of the Urban Research Program

One of the critical components that underpinned the formation of the School of Environmental Planning was the aspiration that it would provide a high research focus in urban and environmental planning. Whilst existing staff members were encouraged to continue researching their areas of interest, the workload in the early days and the need to focus on the program development and the teaching meant that there was little time left for research activities.

To amend this, Professor Brown was seeking to attract a 'high profile urban researcher' to Griffith University. This required funding... So Professor Brown 'convinced' the University's VC that 'urban issues are going to become a new major issues', and that Griffith could benefit from employing a dedicated researcher to explore future urban challenges.

The VC at the time, who understood fully the role of urban issues and urban planning within the larger political sphere, clearly acknowledged the planning challenges posed by unprecedented population growth in Brisbane and the Gold Coast and allocated 'a million dollars... to buy in the million dollar man' (Prof Brown, 2015). The "million dollar man" turned out to be Professor Brendan Gleeson, who in 2003 established the Urban Research Program (URP).

Early recruits to the URP included Dr. Jago Dodson and Dr. Matt Burke, with the centre growing quickly to now comprise eight Research Staff, thirty Academic Members, three Research Assistants, sixteen Adjunct Members and two Administrative Staff.



'The Urban Research Program (URP) was established in 2003 as strategic research and community engagement initiative of Griffith University. The strategic foci of the Urban Research Program are research and advocacy in an urban regional context. The Urban Research Program seeks to improve understanding of, and develop innovative responses to Australia's urban challenges and opportunities by conducting and disseminating research, advocating new policy directions, and by providing training assistance.'

## Other Key Events & Initiatives

### Australian-South African Institutional Links program:

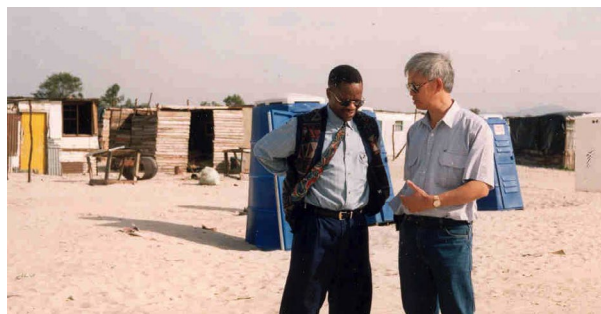
The fledgling School successfully achieved two back-to-back grants from the Australian Government's AusAID Australian-South African Institutional Links program between 1997 and 2002. They forged links between the School and the planning and environmental studies schools of four tertiary institutions in South African and one in Zimbabwe. The initiative led to the development of teaching material, the conduct of short courses and workshops in South Africa and Zimbabwe and to a number of joint publications. This was a significant initiative in the post-apartheid period when the new South African government was seeking to establish innovative planning programs, particularly in their historically disadvantaged universities to educate a new cohort of planner for the future South Africa. That the new School of Environmental Planning was chosen to lead this initiative is testament to the resonance of its founding philosophy and its successful launch into the twenty-first century.

### Planning Institute of Australia (Qld Division) Bursary scheme:

Early in the history of the School Professors Brown and Low Choy recognised the need to attract high-achieving school leavers to the Griffith program. To this end they developed a bursary program funded from the meagre funds of the School. In his capacity as acting head of School, Low Choy



*Australian-South African Institutional Links program*



*Darryl Low Choy providing advice for informal settlement planning on the Cape Flats, South Africa (part of Australian-South African Institutional Links program 1997-2002).*

had the task of implementing the new scheme. At this time he also took the case to the Queensland Division of the PIA which led to the State Division introducing a similar scheme for all planning schools on a state wide basis.

### Vietnamese Urban Planning and Management Courses:

In 2014, the Planning Discipline was commissioned to conduct a two month Short Course for city planners, engineers and managers from Ho Chi Minh City. The eight module course of lectures, field trips and workshops covered: Strategic planning and project management; Active city planning (including urban planning and design and healthy communities and active living); Mainstreaming environment and sustainability in policies and plans (including SEA: Strategic Environmental Assessment); Procedures and processes in urban management; Sustainable transport & infrastructure systems; Climate change adaptation and human settlements; Urban environmental management (including air, noise and water pollution, disease management and habitat planning); and Social-ecological resilience for disaster planning and strategic recovery. These modules reflect the diversity and depth of the expertise now in and associated with the Planning Discipline at Griffith. On the back of the success of the 2014 course, the Discipline was commissioned to repeat the course in 2015 for a second group from HCMC.



*Graduating Class of first Vietnamese Urban Planning and Management Courses June 2014.*



1995

2015

2035

### The Next Twenty Years

The Griffith programs stand apart from other planning programs on a number of levels and in a number of respects. It's underlying strong environmental philosophy and multidisciplinary approach embracing biophysical, socio-economic, cultural and civic sciences, positions it and its graduates to effectively address the contemporary and emerging challenges confronting our cities, regional and rural areas

In terms of the programs, their problem solving, project oriented studios, along with the innovative Planning Practicum, are focused on maximising student learning of 'real world' of planning practice, and they are unashamedly directed toward preparing our graduate for the workplace. This approach bodes well for the future.

The past twenty years has proven the 1995 Vision and that Griffith did have "A New Planning Degree for a New Century". Throughout these twenty years our graduates have proven that the knowledge and skills they gained through an education from Planning@Griffith that they took into practice, provides the essential foundations that can serve the Planning Profession into the future, certainly the next twenty years.

Our graduates have gone on to prove themselves in the workplace and in the profession where many now hold senior and respected positions across all fields of planning.

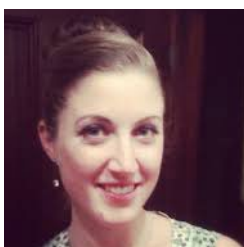
## What do Staff and Graduates say about Griffith's Planning Degree?



Darryl Low Choy



Ben Harman



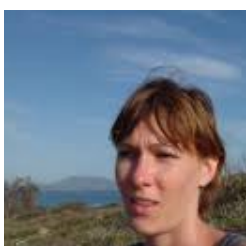
Jenny Wadsworth



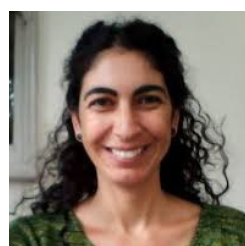
Caryl Bosman



Dianne Dredge



Gemma Schuch



Pazit Taygfeld



Alizadeh Tooran



Pat Dale



Sonia Kirby



Silvia Serrao-Neumann



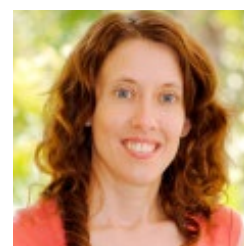
Natalie Osborne



Jenny Cameron



Lex Brown



Deanna Tomerini



Andreas Muhar



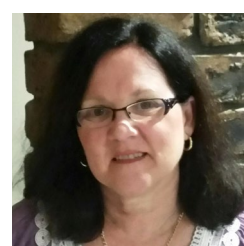
Paul Burton



Thomas Gardiner



Eddo Coiacetto



Kathy Carter



# Memorable Moments

**Ben Harman:** *'The field trip to Cubbie Station was pivotal to gaining a firsthand appreciation and understanding of both planning and environmental matters in a rural and regional context'.*

**Emily Madison:** *'From the long list of things that stand out about my time at Griffith, the one thing that sticks with me the most and reinforces my reason for choosing to study at Griffith is the field excursions. They involved fishing through swampy water to identify fish species or surveying plant species and recording tree coverage and even visiting Stradbroke Island and meeting the traditional owners and learning their culture and history. All the experiences felt authentic and with real world relevance'.*

**Emeritus Professor Pat Dale:** *'The Environmental Impact Assessment course was a brilliant course; It brought together students from diverse backgrounds (and not just planners) to really do an EIA with field work and proper reports. The course was discontinued in its original form, largely for resource reasons'.*

**Dr. Natalie Osborne:** *'As part of my studies I travelled to Sabah, Malaysia, and spent time hiking around the rainforest, learning how to spot animals in the wild, and learning how to trap and identify insects (which is not a skill I've really used since). It was my first time overseas and was an amazing adventure that I got to share with bright, passionate people – some of whom remain my closest friends'.*

**Pazit Taygfeld:** *'Retrospectively, there are many moments that I cherish from my time at Griffith; although I do recall whinging quite a bit...the nights that we spent at the studio trying to get together the mammoth assignment tasks for Strategic Planning Studio, the breakdowns during my honours thesis, the AMAZING sense of relief when I finally printed it at 2 in the morning, the gorgeous group of people (both students and staff) that I have met during that time at the university, the trip to Borneo and getting lost in Danum Valley, and my rather proud mum and dad arriving from Israel for my graduation ceremony...'.*

**Thomas Gardiner:** *'So many great experiences. On a personal level, it was having the opportunity to spend one month in Hong Kong and participate in classes at the University of Hong Kong. Talk about being thrown in the deep end! This was a cultural experience that really defined my planning experience with Griffith University and portrayed the plethora of opportunities that are possible by undertaking a planning program at Griffith University'.*

**Phil Woods:** *'Darryl Low Choy telling us that if any mobile phones go off during the "Studio" he will answer them on our behalf. My boss rang in the middle of a studio and had a lovely conversation with Darryl in front of the entire class!'*

**A/Prof Eddo Coiacetto:** *'The graduation of our first cohort in 1998 probably stands out in all my memory from Griffith University ... it was a really positive, solid and supportive launch and a great thing; It was good for the students, as well as good promotional thing. I don't think it could have done better. It really stood out'.*

## Professor Andreas Muhar

*Institute of Landscape Development, Recreation and Conservation Planning, University of Natural Resources and Life Sciences Vienna, Austria*

### How I got hired at the School of Environmental Planning

In early 1996 I was planning to attend a conference in Brisbane at UQ and to use this occasion for a holiday trip around Australia. Having spent most of my professional life until then in Austria I was also looking for an opportunity for a semester abroad, so I sent my CV to various planning related schools, requesting a meeting to explore the possibilities of a research exchange or short term teaching appointment.

When arriving at the conference in Brisbane the people at the registration gave me a notice from the School of Environmental Planning at Griffith University inviting me for a discussion with some school members at Nathan campus. I was wondering how they had found out that I would be there, as I had not mentioned that particular conference in my message to them.

We met on the terrace of the Environmental Sciences building, which was of course a fascinating place for a visitor, with all these trees and bird sounds. The meeting itself was a bit of a surprise to me: I sat there with Lex Brown and Darryl Low Choy and had expected something like a half-hour smalltalk. However, they started asking me all kinds of questions about my previous work, research focus, teaching experience etc., also about the way planning is structured in my home country and how we organize studio teaching. The discussion was really stimulating, and we soon found ourselves on the same wavelength, I was only astonished that these people had so much time for a foreign visitor. Then eventually, after about two hours, they came out with the message that there was a lecturer position open at the school and that they thought that I would be a suitable candidate. They showed me the advertisement with the selection criteria, and I was almost shocked to see that the search profile was indeed like a description of myself. Of course by then I understood why they had asked these questions: this had been a job interview for a position to which I had not applied.

Five months later I commenced my work at GU as lecturer for Environmental Planning and GIS. The two years in Brisbane were an amazing experience for me, I will always remember the warm welcome to a new city that we as a family received, the stimulating atmosphere at GU, in particular in this pioneer phase of establishing a new program, the commitment to interdisciplinarity amongst the researchers and the inspiring interactions with the students. And I miss these bird sounds....



## Why Griffith?

**Professor Paul Burton:** 'I came to Griffith because it was a dynamic university that knows it has to work hard to deliver the excellent education that it's renowned for. Coming from an English university of long standing, I found a refreshing lack of complacency at Griffith'.

**A/Prof Jenny Cameron:** 'Griffith's reputation for doing things differently. For me, the environmental planning program represented this commitment'.

**Dr. Caryl Bosman:** 'The University had a "green" label and the planning program on the GC was about to open, I was the inaugural staff member; it was an exciting time'.

**A/Prof Eddo Coiacetto:** 'It was different, and it was focused on making a difference in important issues like the environment'.

**Dr. Natali Osborne:** 'I studied here, and I wanted to work here because I admired many of the staff in the School of Environment – their dedication and passion to innovative teaching and research. Griffith University's mission to diversify higher education, and offer study opportunities to people who may otherwise be excluded altogether is something that really resonates with me, and makes me proud to be both a graduate, and an employee, of this institution. Further, I have a great deal of admiration and respect for many of the staff in the School of Environment, their dedication and passion to innovative teaching and research, and their commitment to critical, interdisciplinary research. As such, this is a wonderful place for an environmental planner and human geographer to launch their academic career'.

**Emeritus Professor Pat Dale:** 'The interdisciplinary approach to knowledge acquisition and the pastoral care approach to students. I came to Griffith in 1979'.

**Dr. Deanna Tomerini:** 'Griffith's reputation as a leader in environmental science'.

**Professor Dianne Dredge:** 'Griffith was an alternative to the more traditional urban planning programs and it had a clear sense of its own values and positioning. EVPs relationship with environmental sciences seemed the most logical positioning for a program where future professionals would be confronting a range of very serious global environmental and social problems'.

**Ben Harman, Environmental Planner CSIRO:** 'I was very keen to study town planning but was also conscious of a number of growing environmental concerns such as peak oil and climate change. Griffith was the only university that offered an environmental planning degree which combined expertise in urban and regional planning and environmental studies. This enabled me to learn the theory and practice of urban planning and also gain insight into environmental matters and how planning and policy decisions both shape and influence outcomes at the local scale'.



**Kate Weir, Director, Department of State Development, Infrastructure and Planning, Queensland Government:**

*'The Bachelor of Environmental Planning at Griffith University provided me with a foundation in a multi-disciplinary planning approach, which I now apply every day to solve complex planning issues'.*

**Jenny Wadsworth, Community Partnerships Officer-The Butterfly Effect Project:**

*'The Urban Research Program's research reputation was a significant draw-card for me and my environmental management lecturers at the University of Otago spoke highly of the planning staff at the time'.*

**Jake Anson, State Infrastructure and Planning Manager, AFL Queensland:**

*'I liked that the degree equally focused on urban and environmental planning. As an environmental scientist with an interest in urban issues, that dual academic focus appealed to me'.*

**Thomas Gardiner Planning Officer, Rockhampton Regional Council :**

*'The diversity of the course program. While the clear intention was to gain an understanding of planning theory and processes, the broad spectrum of courses outside of the 'traditional' planning realm was a big incentive. I strongly believe that the inclusion of courses, such as environmental and ecological economics, have been very useful in understanding the issues that influence planning and decision-making in practice'.*

**Dany Southwell, Project officer- Brisbane City Council:**

*'My boyfriend had just completed the Bachelor of Urban & Environmental Planning. I was interested in many of the subjects he took and this was a factor when deciding to attend university at a later date. I had also received feedback from other people that the Griffith Planning course was very good compared to other universities. The course was my first preference, but planning degrees at other campuses were also on the list'.*

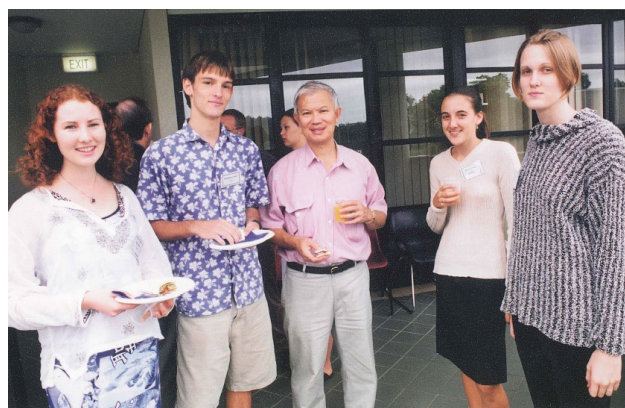
**Dr. Natalie Osborne, Lecturer at Griffith University:**

*'I looked at planning degrees across the entire country – Griffith was my first choice because it was unique in being situated within the School of Environment, and having an explicitly environmental focus. I wanted to save the world, and enrolling in the Griffith Bachelor of Environmental Planning seemed to be the best possible start!'*

**Dr. Silvia Serrao-Neumann, Senior Research Fellow, CRC for Water Sensitive Cities, Urban Research Program:**

*'The reputation on environmental Studies and the gender balance in the teaching staff as opposed to male dominance at UQ and QUT'.*

**Emily Madison, 2014 Planning Graduate:** *'The degree offers courses in environmental management and sciences which I preferred over urban design and architecture offered by other universities'.*



# Distinguishing Attributes of the Griffith Planning Program

**Dr. Natalie Osborne:** *'There are four things I believe distinguish Planning@Griffith; the strong environmental thread in the degree; the multi-disciplinary nature of the School which afford students the opportunity to learn from, study alongside, and travel overseas with people with diverse interests and talents but who share some common values; the critical social science subjects offered (primarily as electives) as these help students understand the relationship of planning to politics and to social issues; and the degree is taught by some award winning educators'.*

**A/ Prof Eddo Coiactetto:** *Griffith Planning Program is unique in four key ways:*

- A foundation in science in its multi-disciplinary sense as a basis for solving complex messy multidimensional wicked real world planning problems.
- A grounding in environmental philosophy where 'environment' is interpreted in its holistic and broad sense (ecological, social, economic, social justice, cultural, geo- chemical).
- A pedagogy that goes beyond merely doing designs or even analysing planning situations and complex messy multidimensional wicked real world planning problems.
- An excellent industry reputation that is based on the quality of graduates. This is built largely on the basis of the studios but also most notably it is the distinctive Griffith Planning Practicum that distinguishes Griffith from other planning schools.

**Dr. Caryl Bosman:** *'Without a doubt it is the "environmental" focus and this is what hooks the students in, mostly. The thing that really makes us different is our student cohort; we*

*have top class year 12 students coming to Griffith because it is different and these students are passionate about the environment and will be the one to really make a difference when they graduate'.*

**Dr. Deanna Tomerini:** *'Two things stand out about the Griffith Planning program ... firstly, being embedded within a school of environmental science and secondly, the emphasis on problem-based learning through the studio learning and teaching experience'.*

**Professor Paul Burton:** *'Griffith's planning programs have always been one step ahead of the field and continue to stand out for bringing a rigorous scientific approach to planning practice'.*

**Sonia Kirby, PhD Candidate and Lecturer:** *'The Planning degree at Griffith it is unique because it comes from a very strong environmental ethos and it is at its core... At Griffith we teach to appreciate the values of environmental systems to our liveability and our life style and respect that core natural or environmental base first and then plan in accordance with that'.*

**Professor Dianne Dredge:** *'My gut feeling is that it is the students that make the program, not the content, curricula or methods of delivery etc. But I will also comment that, at least when I was there, the studio environment was a rich and rewarding teaching and learning environment. Studios were based on the idea that even when knowledge is available and accessible in the form of books and the Internet, learning still has to take place. The studio environment enables students to explore different kinds of knowledge, engage in that knowledge in different ways, and*





---

learn in ways that are hands-on and meaningful. Inquiry-based learning (IBL) is an approach that is now receiving claim, yet in EVP this has been a primary mode of delivery for two decades... Another thought... the number of national teaching awards won by a number of our teaching team also reflects the uniqueness of the Planning Degree at Griffith'.

**Jenny Wadsworth, Community Partnerships Officer-The Butterfly Effect Project:** 'I love the fact that the planning program is embedded within the School of Environment. The majority of staff and students passionate about the wellbeing of our natural environments and bring this perspective into their planning work. For me, this is a vital foundation for innovative and inspired planning'.

**Gemma Schuch, Senior Research Assistant at Griffith University:** 'The interdisciplinary nature of the Planning degree is one of its distinguishing characteristics. During planning studios we would frequently have class discussions that brought together a really broad set of issues from different disciplines. I found this consuming at times and it made what I was studying seems real and relevant because I could see how it was connected with so many things in our lives and environment.

**Pazit Taygfeld, Senior Research Assistant- Griffith University:** 'Griffith planning degree offers a very holistic view of planning; as students we were taught to think outside the box; to consider the multidimensional aspects of every planning problem that we addressed; to think laterally about the issues we explored; to collaborate in a multidisciplinary team; to aim to always find a way to balance the economic, social and environmental issues in the best way possible; and to treat our role as future professional

planners with respect, discipline and integrity. These aspects of the planning degree at Griffith were strongly modelled by a group of enthusiastic and caring staff'.

**Ben Harman, Environmental Planner, CSIRO:** 'Both the experience of the staff within the planning program along with the diversity of courses on offer are key distinguishing factors from other universities currently offering planning degrees. Many of which typically focus on urban design as opposed to environmental planning and policy'.

**Jake Anson, State Infrastructure and Planning Manager, AFL Queensland:** 'The quality of the teaching stood out. I had previously studied at an interstate university that was quite aloof with little interaction between academic staff and students. Griffith encourages such interaction and I got a lot out of one-on-one discussions with teaching staff'.

**Phil Woods, Strategic Energy Project Officer- Sunshine Coast Regional Council:** 'The environmental planning emphasis given to town planning and the "Studios" ..... and how freakin hard we worked in them'.

**Donovan Burton, Climate Adaptation Specialist:** 'The excellent staff, the commitment to teaching and the real-life focus of the degree'.

**Emily Madison, 2014 Environmental Planning Graduate:** 'Planning studios are definitely a distinguishing feature of the planning program. They teach you skills that will be with you for a lifetime such as time management, team work, leadership, attention to detail, patience, and problem solving'.



## Distinguishing attributes of Griffith's Planning Graduates

**Professor Dianne Dredge:** *'The distinguishing feature of the EVP program was, by far, the students. The common thread that brought the students together was their interest in the environment, and their desire to tackle the wicked problems of environmental planning and work towards more sustainable and just societies. This common shared value also allowed the development of great connections between staff and students and facilitated a collaborative learning environment. To this day I am inspired by the students I taught in EVP, and what they have achieved by following these values'.*

**Prof Paul Burton:** *'Griffith graduates have always been noted for their analytical skills and for being work-ready. The experience of working in planning practice through the practicum has always given our students a head start when they enter the world of work'.*

**Emeritus Professor Pat Dale:** *'Our graduates, so I hear, are more flexible in their approaches than those from the more discipline focussed universities. I think the Law component was a critically important one as, being run by the Law School, it exposed the students to another way of thinking and that probably contributes to the flexibility'.*

**Dr Natali Osborne:** *'What impresses me about many of our students is their ability to think critically about the implications of planning interventions, and to consider multiple, diverse, and often conflicting perspectives. Generally speaking, they also tend to have very strong presenting and facilitation skills, which are critical in practice'.*

**A/ Prof Eddo Coiacetto:** *'Griffith's Planning graduates] can be distinguished in three ways: [1] They are always happy to see me (I'm serious); [2] Their enthusiasm post graduation is very high; [3] Their capacity to take on unfamiliar tasks and projects'.*

**Dr Deanna Tomerini:** *'Griffith Planning graduates are able to hit the ground running and are used to working on solving complex multi-faceted problems'.*

**Kathy Carter, Admin Officer (NA):** *'I have found it extremely rewarding to play a support role in the development of our students from their arrival in first year, to watch their enthusiasm shine, then wane a little as the studios test them. Further down the track they connect with their planning degree and come to feel staff really care about them. They come and share their good news and sometimes bad, and finally graduate with 'eyes wide open' to the myriad of opportunities their Griffith Planning degree can provide them'.*



2003 PIA Third Year Awards





'They are really well versed in the politics of planning and especially as it relates to concerns of climate change and equity and the environment more generally. They are confident and engaged which is essential and perhaps rare in graduates these days.'

Dr Caryl Bosman

Graduation Ceremony (2013). Students with A/Prof Eddo Coiacetto and Prof Dianne Dredge



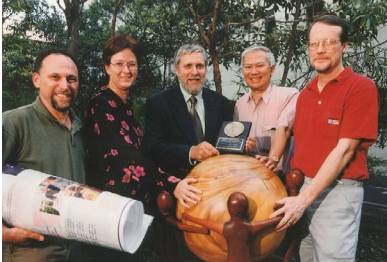
# Collage of Memorable Moments



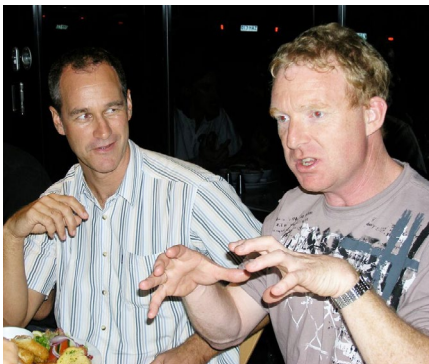












# All Graduated Students

## Urban & Environmental Planning Programs (Nathan & Gold Coast) 1999 – 2015 (Semester 1)

Unfortunately the university's alumni records are incomplete and whilst we have attempted to carefully reassemble each years graduation list, these list may contain omissions. We apologies for any omissions and ask that we be made aware of these for future reference.

### 1999

Mr Gerard Brady  
Mr Ben Charlton  
Mr David Cowan  
Miss Helen Danalis  
Mr Graham Dart  
Mr Alfred De Zilva  
Mr James Johnston  
Ms Sonia Kirby  
Ms Victoria Le Gear  
Mr Timothy McKay  
Mr Matthew Pitot  
Mr Mark Powney  
Ms Laurel Smith  
Mr Stewart Spencer  
Ms Kathleen Weir

### 2000

Mr Ian Baldwin  
Ms Sian Davis  
Mr David Eisentrager  
Ms Wendy Evans  
Mr Hamish Goodwin  
Ms Cheryl Greer  
Ms Amanda Howard  
Mr Leonard Hutson  
Mr Darren Johnson  
Miss Bronwyn Kelly  
Miss Kate Le Rossignol  
Ms Amanda Matchett  
Mr Angus McGuckian  
Mr Reid McNamara  
Mr John Merrick

Ms Rowena Michel  
Miss Sharon Moller  
Mr Stuart Ricketts  
Mr Gavin Rowan  
Miss Selina Sonter  
Mr Shane Spargo  
Ms Katrina Stuetzel  
Mr Steven Thompson  
Ms Audrey Van Beusichem  
Mr Benjamin van Wegen  
Mr Mark Wiltshire

### 2001

Mr Benson Tok Hin Au-Yeung  
Mr Ashley Baker-Finch  
Mr Elliott Blackley  
Miss Kaye Butterworth  
Mr Eric Constantino  
Miss Anna Cronin  
Mr Christopher Fogarty  
Ms Fiona Fullarton  
Mr Bradley Jones  
Mr Andrew Lennox  
Mr Mark Lewis  
Mr John Merrick  
Mr Daniel Murray  
Mr Stuart Ricketts  
Ms Claire Ridgewell  
Mr Douglas Schneider  
Miss Fairlie Thompson  
Mr Justin Wells  
Ms Terry Young

### 2002

Mr Michael Beekhuyzen  
Mr Paul Brookfield  
Mr Simon Dwyer  
Mr Brent Gardiner  
Mr Ian Gordon  
Mr Richard Hanson  
Mr Iain Knight  
Mr John McKennarney  
Ms Casey Mitchell  
Mr David Monson  
Mr Alister Oldham  
Ms Kristy Plant  
Mr Paul Rull  
Mr Dale Schroeder  
Miss Joanne Symes  
Mr Christopher Teitzel  
Ms Fiona Wallin  
Mr Benjamin Walsh

### 2003

Miss Sandhya Aiyar  
Mr Stephen Ball  
Ms Lauren Barnaby  
Ms Amy Barrett  
Mr Lucas Batton  
Mr Matthew Borsato  
Ms Cassandra Boyle  
Mr Trent Burke  
Mr Paul Byrne  
Mr Crawford Connell  
Mr Christopher Engle  
Miss Rachel Fletcher

Mr Mark Fox  
Miss Sonya Jeffcoat  
Mr Matthew Jordan  
Mr David Lowe  
Mr Brent McLean  
Mrs Fern Oldham  
Mr Michael Phillips  
Mr Steven Schwartz  
Ms Alison Stevens  
Ms Tamara Sticher  
Ms Natalie Wall  
Ms Lauren Westley  
Ms Amanda Whybird

### 2004

Mr Cameron Adams  
Mr Richard Alarcon  
Ms Kristy Albrecht  
Miss Leanne Allen-Ankins  
Ms Leah Bagnall  
Mr Simon Bentley  
Ms Helena Brown  
Mr Adrian Cedro  
Mr Neal Charlton  
Ms Megan Cobb  
Ms Melissa Collie  
Mr Mark Dekker  
Miss Angela Demasi  
Mr Sean Dickson  
Miss Prudence Earle  
Mr Rick Evans  
Mr Scott Evans  
Ms Hailey Franks



Mr Adam Fryer  
 Ms Sarah Gall  
 Ms Melissa Grimes  
 Mr Giles Hassall  
 Mr James Heading  
 Mr Benjamin Heaton  
 Ms Tiffany Lacey  
 Ms Susan Laitala  
 Ms Jenevere Lake  
 Mr Stephen Larter  
 Ms Helena Lulham  
 Ms Elissa McLeod  
 Mr Michael Moran  
 Mr Luke Munro  
 Mr Shane Murrihy  
 Mr Benjamin Orford  
 Mr Scott Pearson  
 Mr Lee Perkins  
 Ms Diana Rampen  
 Mr Peter Redshaw  
 Mr Paul Rice  
 Mr Timothy Riches  
 Mr Jay Rosenberg  
 Mrs Alissa Roxburgh  
 Ms Wendy Savill  
 Mr Sean Slevin  
 Miss Erin Sonogo  
 Ms Kelly Stacey  
 Ms Maisie Hoi Yee Tang  
 Ms Selen Tear  
 Mr Ashley Thornton  
 Mr Paul Tobin  
 Mr Hiroyuki Tojo  
 Mr Christopher Vize  
 Mr Andrew Wells  
 Ms Anna Welsby  
 Mr Christopher Werner  
 Ms Janice Worland  
 Ms Adriana Ziu

## 2005

Mr Jason Air  
 Ms Lucy Anderson  
 Ms Claire Ellway

Mr Gregory Johnstone  
 Mr Adam Rigby  
 Mr Matthew Taylor  
 Miss Elizabeth Turner

## 2006

Mr Mitchell Alward  
 Mr Matthew Bartholomaeus  
 Mr Brendan Best  
 Mr Anthony Bowles  
 Mr Donovan Burton  
 Mr Christopher Cantwell  
 Miss Amanda Clark  
 Mr Brenden Clifton  
 Mr Matthew Cole  
 Ms Lesley Collins  
 Ms Natalie Coss  
 Mr Timothy Cupitt  
 Mr Daniel Daley  
 Mr Glen Dare  
 Mr Ronald Dela Pena  
 Ms Kristin Demasi  
 Mr Matthew Deshon  
 Miss Sarah Doring  
 Mr Haydn Elliott  
 Ms Madeleine Fletcher  
 Mr Jonathan Giles  
 Mr Dominic Hammersley  
 Mr Glenn Hammill  
 Mr Benjamin Harman  
 Ms Carly Hoof  
 Miss Sarah Jeffery  
 Mr Christopher Kefford  
 Ms Katherine Keleher  
 Mrs Wendy King  
 Miss Luchia King  
 Mr Murray Lane  
 Ms Erin Laurie  
 Ms Angela Mann

Miss Kim Mayberry  
 Ms Jane Moroney  
 Mr Steven Morton  
 Ms Melissa Neighbour  
 Mr Daniel O'Connor

Miss Andrea O'Neill  
 Ms Jane Orme  
 Miss Katrina O'Rourke  
 Ms Victoria O'Rourke  
 Ms Karen Page  
 Ms Mira Pavey  
 Mr Benjamin Prior  
 Miss Kylie Rolley  
 Mr Jonathan Saavedra  
 Mr Liam Saxby  
 Miss Sally Scott  
 Mr Timothy Sharp  
 Mr Scott Shearer  
 Mr Simon Short  
 Mr Stephen Switez-Glowacz  
 Ms Pazit Taygfeld  
 Miss Bridget Tidey  
 Mr Antonio Tolo  
 Ms Yeong-Ling Wang  
 Ms Sarah Ware

## 2007

Miss Antonia Bartels  
 Mr Anthony Bere-Streeter  
 Miss Emma Coutts  
 Miss Amy Crocker  
 Mr Tyson Croll  
 Mr Nicholas Culpeper  
 Ms Khim Denson  
 Mr Daniel Favier  
 Mr Ashley Folster  
 Mr Nicholas Fullerton  
 Ms Elizabeth Giles  
 Miss Laura Holt  
 Mr Mark Iliffe  
 Mr Carl Knaggs  
 Ms Catherine Leschkau  
 Mr Matthew Menzel  
 Mr Timothy Mitchell  
 Miss Anielle Mitchell  
 Mr Aaron Morgan  
 Mr Adam Noller  
 Mr Luke Norris  
 Mr Timothy O'Leary

Miss Nicole Polzi  
 Mr Luke Robertson  
 Mr Martin Scanlan  
 Miss Carly Stebbing  
 Ms Maris-Claire Teske  
 Mr Benjamin Travers  
 Miss Renay Weir  
 Miss Hayley Wells  
 Mr Jason West  
 Ms Michelle Willemse  
 Mr Samuel Woods  
 Mr Steven Yates  
 Ms Michelle Yu

## 2008

Mr Stephen Baskerville  
 Mr Luke Bertini  
 Ms Zoe Bishop-Kinlyside  
 Mr Stephen Blore  
 Ms Kate Buchanan  
 Mr Benjamin Cebuliak  
 Ms Elizabeth Clarke  
 Ms Theresa Curcio  
 Miss Kelly Drobek  
 Miss Nicola Duffy  
 Miss Sally-Anne Elliott  
 Miss Emily Gamble  
 Ms Tonia Gatt  
 Mr Nicholas Goulter  
 Mr Jake Harrison  
 Mr David Hooper  
 Mr James Isaac  
 Miss Jillyan Kelly  
 Mr Daniel Kidd  
 Miss Eve Kirkwood  
 Miss Upendo Kowero  
 Mr Justin Lamerton  
 Miss Nicole Lusan  
 Ms Anna Maccheroni  
 Ms Bleuenn Marchand  
 Ms Margaret McNamara  
 Miss Prudence McNeillage  
 Mr David Moon  
 Mr Thor-Maria Nelson

Mr Mark O'Brien  
Miss Ursula O'Donnell  
Mr Ashley Perkins  
Mr Jonathon Perrett  
Ms Audrey Pershouse  
Miss Kamaya Pillay  
Mr Joshua Pownell  
Ms Jodi Ravey  
Mr Luke Ritchie  
Mr Thomas Rowland  
Mr Carl Ryan  
Miss Sarah Sanders  
Miss Lucy Sawyer  
Ms Amy Schmidt  
Ms Gemma Schuch  
Ms Alice Sherring  
Ms Catherine Simmons  
Ms Theodora Sotiris  
Ms Amy Stacey  
Mr Alexander Steffan  
Mr Elliott Thornton  
Mr Takuya Toyoura  
Miss Christine Whitfield  
Miss Sonia Wise

## 2009

Ms Sahar Ahmadzadeh  
Ms Judy Austin  
Mr Alexander Briers  
Mr Christopher Brooks  
Mrs Sandra Brotzman De Vallejo  
Mr Duncan Campbell  
Mr Simon Chap  
Miss Tracy Clark  
Mr Donald Cowan  
Miss Belinda Cox  
Miss Cassandra Craddock  
Mr Joshua Culnane  
Miss Nicole Dance  
Mr Leonard Daws  
Miss Natalia De Faveri  
Miss Sarah de Vries  
Mr Peter Do  
Mr James Duncan

Mr Andrew Dziedzic  
Mr Dylan Falconer  
Mrs Adele Fenwick  
Miss Alisha Ferguson  
Mr Yianni Flourentzou  
Miss Jessica Hack  
Mr Brett Hookway  
Miss Danae Johnston  
Ms Amanda Lang  
Dr Nicolette Larder  
Mr Joshua Leddy  
Miss Ho Yi Leung  
Miss Jessica Lisle  
Mr Mitchel Longhurst  
Ms Justine Mahanga  
Mr Lane McMillan  
Mr Alan Miljkovic  
Mr Peter Milles  
Mr Nathanael Mills  
Mr Benjamin Mountcastle  
Mr Peter Muldoon  
Miss Adela Murimba  
Miss Rachel Nicholson  
Dr Natalie Osborne  
Miss Danielle Outram  
Mr Nicholas Parry  
Mr Clayton Pearson  
Miss Jane Pilkington  
Mrs Cheryl Pollitt  
Ms Arcel Quiatchon  
Mr Damian Rigby  
Mrs Brija Robertson  
Miss Peta Rutherford  
Mr Hermann Schoenhart  
Ms Bijal Shah  
Mr Jacob Sickinger  
Mr Graham Simpson  
Mr Graham Snow  
Ms Jennifer Wadsworth  
Mr Cameron Ward  
Ms Emma Williams  
Mr Garath Wilson  
Miss Judy Yau

## 2010

Mr Garryn Armstrong  
Miss Stevie Armstrong  
Ms Davina Baird  
Miss Samantha Balogh  
Miss Julijana Barac  
Mr Daniel Barber  
Miss Jessica Berryman  
Mr Lodevicus Botes  
Dr Jocelyn Bowyer  
Mr Sean Brien  
Mr Dean Butcher  
Ms Giovannella Carini  
Ms Louise Cooper  
Mr Christopher Corlett  
Mr Luke Currey  
Mr Christopher Curtis  
Ms Nasrin Dehghani  
Miss Lauren Dykes  
Miss Sally-Anne Elliott  
Ms Hayley Eske  
Mr Matthew Fullerton  
Mr Camm Gibson  
Ms Brooke Goodfellow  
Mr Jackson Gray  
Mr Toby Greenwood-Jones  
Mr Michael Guy  
Mr Clinton Hanney  
Miss Emily Hatfield  
Mr Rathnasiri Herath  
Mr Andrew Humpherys  
Ms Emily Hunter  
Miss Julie Hunter  
Mr Benjamin Iser  
Mr Timothy Kinny  
Mr Darryl Kong  
Miss Kim Kurtz  
Mr Michael Lee  
Mr Gooch Lee  
Mr Nicholas Lennan  
Mr Nahum Moreau  
Miss Tariro Muzangaza  
Mr Luke Nixon  
Ms Jacqueline Nolen

Mr Nicholas Parker  
Miss Mia Potter  
Mr Michael Procter  
Mr Daniel Purser  
Ms Melissa Royce  
Miss Allison Siddaway  
Mr Stuart Smith  
Mr Michael St Clair  
Miss Kristie Tasney  
Mr Kevin Travers  
Miss Madison Van De Velde  
Miss Jorja Wardrope  
Miss Louise Warren  
Mr Samuel Watson  
Miss Amelia West  
Mrs Xun Zhang

## 2011

Miss Sofia Aguirre Dyjak  
Miss Thalia Allsop  
Mr Heath Anderson  
Mr Jacob Anson  
Mr Simon Ash  
Mr Joshua Baker  
Mr Gregg Baker  
Mr Shane Booth  
Miss Danae Bragg  
Mr Patrick Brown  
Mr Darcy Brown  
Mr Matthew Buchanan  
Miss Ainslee Burley  
Mr Thomas Connor  
Mr Naveen De Silva  
Miss Natalie Deans  
Ms Celica Dharmawan  
Ms Tarryn Dreyer  
Mr Joshua Eagleton  
Ms Taylor Edwards  
Mr Jason Ellerby  
Mr Nathan Eshraghi  
Miss Naomi Finlayson  
Miss Rochelle Fleming  
Mr Sean Gallagher  
Mr John-Matthew Gibson



Ms Elizabeth Gibson  
 Ms Leonie Gleeson  
 Miss Keira Grundy  
 Ms Jie Han  
 Mr Adam Heap  
 Miss Jessica Hensman  
 Mr Jordan Holman  
 Mr Nicholas Holmes  
 Mr Andrew Holt  
 Mr Moosa Ibrahim  
 Mr Benjamin Iser  
 Miss Celeste Jensen  
 Mr Troy Kahler  
 Mr Navid Khajei Jahromi  
 Mr Stephen Kinsela  
 Mr Josh Larsen  
 Ms Hanh Phuc Le Quang  
 Mr Daniel Lidbetter  
 Miss Elise Lim  
 Ms Anne Maccheroni  
 Miss Christina McConville  
 Mr Michael Mead  
 Miss Jessica Morcombe  
 Miss Tegan Murray  
 Miss Stacie Murrell  
 Mr Muhammad Patel  
 Miss Ruth Potts  
 Mr Nicholas Robinson  
 Mr Benjamin Rolf  
 Mr Nicholas Rossmann  
 Mr Matthew Ryan  
 Mr Joseph Sheridan  
 Ms Laura Sidi  
 Miss Nicola Smit  
 Ms Kate Smyth  
 Mr Francisco Enrique Solis Diaz  
 Mr Daniel Szalkowski  
 Mr Alexander Tonkin  
 Mr Timothy Walker  
 Miss Elke Watts  
 Mr Luke Wicking  
 Mr Thomas Withers  
 Miss Kimberley Yaun

## 2012

Mr Zakky Ali  
 Miss Marit Askbo  
 Mr Tom Barker  
 Miss Alana Barry  
 Mr Jack Belford  
 Miss Jenny Bernard  
 Miss Sinead Busher  
 Mr Corey Callahan  
 Ms Vicki Carney  
 Miss Vishmi Chandanan  
 KuruppuMudiyanselage  
 Mr Daniel Chapman  
 Mr Chih-Chan Chen  
 Mr Ryan Cheng  
 Mr William Collinge  
 Mr Aaron Cornel  
 Mr Fraser Creighton  
 Mr Luis Cruz Sierra  
 Mr Jonathan Cutting  
 Mr Charles Druckmann  
 Mr Alex Glassington  
 Ms Nicole Glenane  
 Mr Nathan Goldman  
 Mr Ivan Santiago Gutierrez Feria  
 Mr Kale Hardie-Porter  
 Mr Sam Harrison  
 Mr Savvas Hatzipapas  
 Miss Ayla Hayati Fallah  
 Miss Nina Hering  
 Mr Emmett Herps  
 Miss Cheri Hill  
 Mr Zane Howell  
 Miss Candace Jarrett  
 Miss Jessica Johnson  
 Ms Emily Lewis  
 Mr Ian Lowndes  
 Mr Rui Luo  
 Miss Alexandra Mackenroth  
 Miss Erin Mackie  
 Mr Samuel Maguire  
 Miss Andrea Marais  
 Mrs Neda Mardani  
 Miss Ashley Martin

Ms Claire Maytom  
 Mr Cameron McDonald  
 Miss Jaclyn McKirdy  
 Mr Brendan Mitchell  
 Mr Brett Morrissey  
 Mr Stuart Newcombe  
 Mr James O'Brien  
 Mr Andrew Parison  
 Mr Timothy Pearson  
 Mr Cameron Pierce  
 Ms Rikki Pieters  
 Mr Phillip Pulley  
 Miss Raha Rabiei  
 Miss Kirsten Rex  
 Mr Ryan Robinson  
 Miss Katherine Rosales Rosan  
 Mrs Kathryn Sarikas  
 Mr Dwayne Scicluna  
 Mr Christopher Selten  
 Miss Chelsey Smith  
 Miss Xiao Wei Sun  
 Miss Hannah Tohill  
 Mr Ross Tyllyer  
 Miss Kathleen Urbahn  
 Mr Elliot Ward  
 Mr Samuel Westbrook  
 Mr Shane Weterings  
 Mr Adrian Woolley  
 Mr Joshua Xidas

## 2013

Miss Cindy Alani  
 Mr Mahmoud I A Almashharawi  
 Miss Nicole Anderson  
 Mr Philip Anderson  
 Mr Brury Bangun  
 Miss Suzanne Barry  
 Miss Laura Boswell  
 Mr Ethan Bowering  
 Mr Nathan Bultitude  
 Mr Gabriel Julian Castellanos  
 Rodriguez  
 Mr Walter Castillo Mendoza  
 Miss Tara Castle  
 Mr Jay Chambers

Mr Edward-Sieu Chuc  
 Ms Louise Cooper  
 Mr Christopher Dixon  
 Miss Ellyn Dorman  
 Miss Ania Dorocinska  
 Mr Michael Early  
 Mr Sheng Fang  
 Mr John Ferguson  
 Ms Claire Forbes  
 Mr Leigh Fox  
 Mr Fraser Gassman  
 Mr Luke Gavin  
 Mr Steven Gillett  
 Miss Jemma Glover  
 Mr Nathan Goldman  
 Mr Wade Grierson  
 Mr David Guest  
 Mr Bastien Guillon  
 Mr Daniel Hanfling  
 Mrs Kailee Hardy  
 Mr Thomas Harrison  
 Miss Simone Healy  
 Mr Michael House  
 Mr Andrew Humpherys  
 Mr Joel Ingles  
 Miss Rachel Ivin  
 Miss Kirstin Knight  
 Mr Ba Khanh Phuong Le  
 Mr Ryan Lewis  
 Miss Shuang Li  
 Ms Holly Lucas  
 Mr Scott Lucke  
 Mr Rupert Luxton  
 Miss Sophie Malkin  
 Mr Patrick Malone  
 Ms Lisa McKay  
 Mr Jacob McKinnon  
 Mr Adam Mewing  
 Miss Anja Morgan  
 Mr Adam Morris  
 Mr Hoagy Moscrop-Allison  
 Mr Daniel Mulherin  
 Miss Hau Nguyen  
 Miss Sarah Nixon  
 Mr Quinn Norrie

Mr James Olsen  
 Mr James O'Toole  
 Mr Nathan Parer  
 Mr Eduardo Pazmino Jaramillo  
 Miss Kimberly Pienaar  
 Mr Tomislav Rados  
 Mr Christopher Richards  
 Miss Charne Robbertse  
 Ms Geraldine Salat  
 Miss Saba Salim Eghanei  
 Mr Anthony Schesky  
 Mr Joshua Skinner  
 Mr Benjamin Spek  
 Mr Thomas Stacey  
 Miss Lydia Summers  
 Mrs Konomi Takizawa  
 Mr Michael Tanko  
 Ms Amelia Taylor  
 Mr Matthew Turner

## 2014

Mrs Bayan Abdi Puya  
 Miss Farrah Albermani  
 Mr Matthew Amos  
 Mr Nicholas Barnes  
 Miss Kirstie Barraza  
 Mr James Beattie  
 Mr Simon Boxsell  
 Mr Matthew Brack  
 Miss Stephanie Breuer  
 Mr David Brophy  
 Miss Ellen Brown  
 Miss Jane Burrell  
 Miss Sophie Chivas  
 Mr Matthew Close  
 Miss Samantha Colbran  
 Mr Nicholas Cudicio  
 Mr Adrian Dube  
 Ms Renette Feracho  
 Miss Vanessa Garcia Florez  
 Mr Thomas Gardiner  
 Mr Jason Giddy  
 Mr Jarrod Gillies  
 Miss Nicola Gould

Miss Rachael Greene  
 Mr Peter Honeyman  
 Mr Luke Houghton  
 Miss Cassandra Hutton  
 Miss Kelley Jessen  
 Ms Robyn Kelly  
 Mr Waimana Kingi  
 Mr Timur Kirilenko  
 Mr Elrico Koeberg  
 Mr Ba Khanh Phuong Le  
 Miss Yusi Liu  
 Mr Samuel Lyons  
 Miss Kate Macdonald  
 Mr Scott Mainey  
 Mrs Ntsepase Mabatloun  
 Makara-Khatleli  
 Mr Liam Martin  
 Miss Olivia McDonald  
 Miss Jocelyn McDowall  
 Miss Rebecca McPherson  
 Mr Dylan Molan  
 Miss Jackelyn Moloney  
 Mr Luis Moriones  
 Mr Beau Morris  
 Mr Simon Morrison  
 Miss Ivana Music  
 Miss Alessandra Nardi  
 Ms Gillian Naylor  
 Miss Jessie Oliver  
 Miss Georgia Pilkington  
 Mr Kava Piran  
 Mr Jack Priestley  
 Mrs Lisa Richardson  
 Miss Lauren Schmidt  
 Miss Lillian Sheppard  
 Mr Samuel Smith  
 Miss Emily Sproule  
 Mr Jared Stewart  
 Mr Matthew Stringer  
 Mr Samuel Stubbings  
 Mr Andre Sultan  
 Miss Karolina Szenczi  
 Mrs Konomi Takizawa  
 Miss Alexandra Tobin  
 Miss Kari-Ann West

Miss Laura Willems  
 Miss Katelyn Wright  
 Mr Ning Xue  
 Mr Xiaoyue Zhong  
 Mr Ricky Zietlow

## 2015

Mr Brendan Barnes  
 Mr Kundan Basnet  
 Mr Christopher Clay  
 Mr Andrew Copperwaite  
 Ms Sherydan Cullen  
 Mrs Wendy David Laviolette  
 Mr Byron Davis  
 Mr Luke Donaldson  
 Mr Elliott Fairon  
 Mr Mohammad M T Ghafoor  
 Mr Matthew Gibbins  
 Mr William Hardy  
 Mr Thomas Holmes  
 Mr Aaron Jamieson  
 Miss Lorraine Lee  
 Miss Emily Maddison  
 Mr Joseph Manner  
 Ms Nicole McKirdy  
 Mr Samuel Monaghan  
 Mr Luis Noguez  
 Mr Alex Osborne  
 Mr Louis-Marie Pont  
 Miss Madison Ruygrok  
 Mr Isaac Scheer  
 Mr Bradley Stewart  
 Miss Elise Tsang  
 Mr Charles Wayment  
 Miss Taylor Williams  
 Miss Yi Xu  
 Mr Michael Zaidan  
 Mr Guanhua Zhao









ENVIRONMENTAL PLANNING  
AT GRIFFITH UNIVERSITY

[griffith.edu.au/environment-planning-architecture/  
urban-environmental-planning](http://griffith.edu.au/environment-planning-architecture/urban-environmental-planning)